



Monocolor Flexible SMD LED SPECIFICATION

Model No.: STRF5-5050-RGB-30-12V

Features:

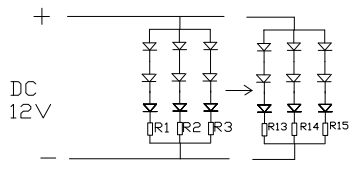
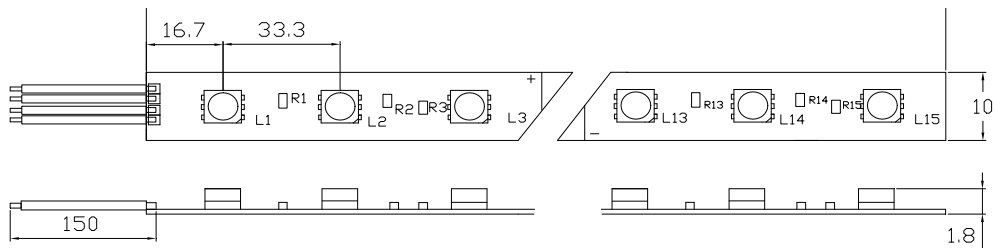
The application of soft & flexible PCB makes the strip possible to be bent into any shape as per users' needs. The viewing angle as wide as 120° and adjustable length by cutting off or connecting every three LED's enable it to be more suitable for the applications of signs, advertisements and backlights.

Applications:

- Channel Letters
- Lighting source for shop windows
- Indoor Decoration Lighting
- Advertising Signs
- Replacement for Neon



Non-waterproof 5050-30 LEDS/M LED strip



note

- 1.All dimensions are in millimeters.
- 2.Tolerance is $\pm 0.25\text{mm}$ unless otherwise specified.
- 3.Lead spacing is measured where the leads emerge from the package.
- 4.Specifications are subject to change without notice.



Electrical/Optical Characteristics

Part No	Color	Operating Voltage	LED 'Q/m	Length	LED spacing	Wavelength h/°c	Luminous flux (lm)/m
STRF5-5050-RGB-30-12V	Red	12DC	30	5m	33.3mm	620-625	35-50
	Green					518-525	60-75
	Blue					465-470	12-18

Maximum power per meter	7.2W	Maximum current per meter	0.6A
Maximum power per roll	36	Maximum current per roll	3A
PCB thickness	0.25mm	operating humidity	30%~85%
light source	5050	Led quantity	3
PCB material	polyimide	Maximum connection length	5m
PCB color	White/black/yellow	power connection mode	Wire or SM-4P wire
luminescence angle	120	Package Type	Lectrostatic prevention package
luminescence decay	<15%(10,000Hs)	product weight	0.103kg
life span	50,000Hs	Safety Certification	UL/CE/ROHS
storage temperature	-40°C~80°C	operating temperature	-30°C~60°C



■ **How to use:**

1. Please use this product with 12V DC.
2. Please complete the ESD-prevention before using.
3. The flexible LED strips should be neither bent into right-angles nor folded.
4. For this product, every three LEDs on the same strip can be cut off and use separately (namely, every 100mm works as a group). Please refer to the 'Outline' for the details.
5. The calculating way that how many this product a power supply can upload is: the current(A) that the power supply can offer/the current distributed to each single group*total group of this product
6. The strip quantity of each sting that directly connected to the power supply should not exceed 30 PCS; otherwise, the brightness of the strip at the end of the string will be dimmed because of the voltage reduction. Although a loop circuit can avoid reduction happening, one string should not connect too many strips.
7. The wire with gray line is anode, while the red 、 green 、 blue 、 yellow 、 white is cathode, If polarities connected in a wrong way, the strip will not be lit, but will not be damaged either. What only needs to do is changing the polarity connection.
8. When installing the strips in the plastic letters or characters, please try to use 3 or 4 branch wires and when doing the connection try to make the strips in a letter or character or box form a loop circuit or several loop circuits by using red and black wire to connect the strips at the end of the strokes together according to their polarities.
9. This product is water-proof.
10. When installing the strip, the double-sided adhesive tape or carpenter's glue is required to make the clip slot of the strip firmly stuck together. When using the double-sided adhesive tape, proper glass glue must be spread to avoid the strip falling off after long-time exposed in the sunlight.
11. The strip quantity of each sting that directly connected to the power supply should not exceed 30pcs; otherwise, the brightness of the strip at the end of the string will be dimmed because of the voltage reduction. Although a loop circuit can avoid reduction happening, one string should not connect too many strips.
12. No push, squeeze or press on the components of the strip for fear damaging the components to affect the lighting effects.